

ELEVATED LIVING
haique[®]
Luxury Quartz Surfaces

www.haiquequartz.com

ESPRIT STONES PRIVATE LIMITED

Registered Office:
SP-1, Udhyog Vihar
Sukher Industrial Area
Udaipur - 313004
Rajasthan, India
Phone: +91 91166 52215

Factory:
Khasra No. 1106 to 1109,
Kukdeswar Mahdev Road
Lakhawali, Udaipur - 313011
Rajasthan, India
Email: hello@haiquequartz.com

Mumbai Office:
12, Midas, Sahar Plaza Complex
J.B. Nagar, Andheri
East Mumbai - 400 059, India
Phone: 022 4014 8324
Email: mumbai@haiquequartz.com

Branch Offices:
Delhi: +91 91166 52342 | Nagpur: +91 91166 52342 | Kolkata: +91 89059 95971
Bangalore: +91 89059 95972 | Hyderabad: +91 89059 95974 | Ahmedabad: +91 89059 95975

Accreditations



THE
WORLD
AT YOUR
HOME



ELEVATED LIVING
haique[®]
Luxury Quartz Surfaces

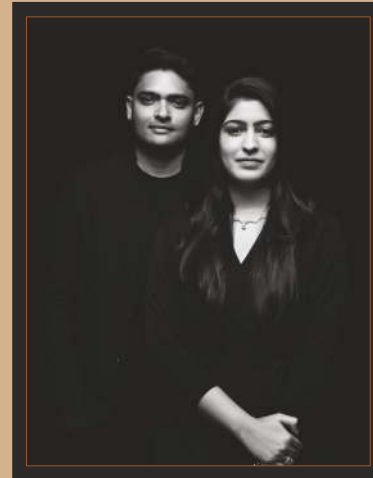
IF YOU THOUGHT STONE WAS ANCIENT, THINK AGAIN. HAIQUE IS THE FOREMOST FASHION BRAND FOR QUARTZ SURFACES, INSPIRED BY THE EVER-CHANGING GLOBAL CULTURE, COLOUR TRENDS, AND LIVING CHOICES. HAIQUE CREATES HIGH-END QUARTZ SURFACES FOR A VARIETY OF TASTES AND STYLES.

HAIQUE'S ENGINEERED QUARTZ SURFACES ARE THE WORLD'S LARGEST SEAMLESS SLABS, INFUSED WITH SPECTACULAR DESIGNS, COLOURS, AND PATTERNS. HAIQUE QUARTZ SURFACES ARE MADE TO ENHANCE LIFESTYLE AND TRANSFORM TABLE TOPS.

HAIQUE IS OWNED AND OPERATED BY ARAVALI GROUP, A MINING AND MINERAL CONGLOMERATE AND GATTANI GROUP A MULTI-FACETED CONGLOMERATE WITH PROMINENT PRESENCE IN POLYMERS AND CLEAN ENERGY. ARAVALI GROUP'S JOURNEY BEGAN 45 YEARS AGO WITH MINERAL EXTRACTION OF THE TREASURED ARAVALI ONYX MARBLE, SOAPSTONE & EXOTIC GRANITES. WITH THE CHANGING GLOBAL TRENDS, ARAVALI AND GATTANI GROUPS CHOSE TO JOIN HANDS TO FORAY INTO THE PRODUCTION OF QUARTZ SURFACES. TODAY, HAIQUE QUARTZ ALSO OPERATES ITS OWN QUARTZ MINES, QUARTZ GRITS AND POWDER PROCESSING PLANTS AS WELL AS A HIGHLY ADVANCED RESIN MANUFACTURING FACILITY. TO TOP IT ALL, A HIGHLY EFFICIENT TEAM OF TALENTED PEOPLE WHICH ALL COMBINED MAKES THE STRENGTH OF THE COMPANY UNMATCHABLE.



ABOUT US



FOUNDER'S DESK

Building a Global brand

We, at Haique Quartz, believe in a relationship-based business, and our associates are the cornerstone to its success. We have high aspirations from our team, and they have accomplished them all. Our team members are passionate about their profession and are always keen to learn more about their customers' needs, new technologies and concepts. We constantly strive to provide our customers with what they want, which includes: -

Product quality above their expectations, world-class services, and great value for money.

In the truest sense of the term, Haique is a designer's brand, instantly recognisable by its stunning inventive looks that have a class with originality in design aesthetics and the capacity to please the eye. The brand instills in the halo of accomplishment and status. Our goal is to make Haique the unchallenged leader and the complete one-stop-shop for all kitchen counter tops, vanities and other interior solutions.

Haique Quartz is exporting its products to discerning clients across 30+ countries worldwide, including the United States, the United Kingdom, Europe and the Gulf Countries.

Our quartz surfaces are influenced by the global culture and human sentiment, bringing together the finest design talent together with the best in engineering & technology. Our quartz surfaces are created from top-grade quality raw materials and finished with Breton polish to give our surfaces an extra edge in terms of the quality of our slabs.

Our "Make in India" goal is widely acknowledged, with our products being shipped to most developed countries around the globe and Haique's commitment to excellence and customer satisfaction will always stand strong.

www.haiquequartz.com



ELEVATED LIVING
haique[®]
Luxury Quartz Surfaces

Team & Unit

A team of well trained and exceptionally motivated individuals working on a 1,00,000 sq. ft state-of-the-art plant ensure that Haique's commitment to quality & timeliness is maintained

Where stars of nature meet state-of-the-art technology



ELEVATED LIVING
haique[®]
Luxury Quartz Surfaces

Quality Testing

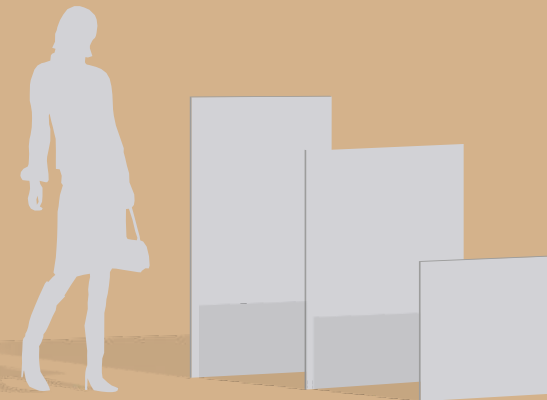
Every slab undergoes rigorous quality testing to ensure it meets our extremely high standards of colour, hue and consistency

ELEVATED LIVING
haique[®]
Luxury Quartz Surfaces

The manufacturing process begins with a rigorous inspection of all incoming raw materials. These are blended at a ration of up to 93% natural quartz aggregates with pigments and polymer resins. Haique quartz surfaces are manufactured through a highly automated, yet strictly monitored process in a state-of-the-art factory in Udaipur, Rajasthan.

Set in an area of 6 acres, the plant is a single unit of **1,00,000 sq. ft** with a fully integrated setup that spans the entire process, so as to maintain rigorous quality standards and a steady rate of productivity throughout.

Completely automated Italian plant, finishing line from **Breton** right from Loading, Trimming, Calibrating, Polishing and Packing.



Features

-  Easy to Install
-  Resistant to Staining
-  Impact Resistant
-  High MOR
-  Thermal Shock Resistant
-  Eco-friendly & Sustainable
-  Acid Resistant
-  Easy to Clean
-  Frost Resistant

SLAB SIZE

3450 x 1950 MM
3250 x 1650 MM
3200 x 1450 MM

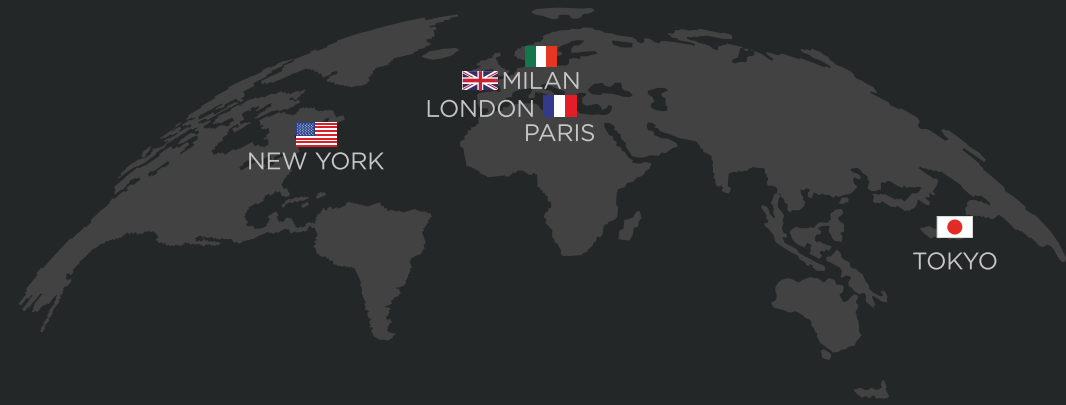
FINISHES

GLOSS LEATHER
SATIN MATTE
HONED STONE

THICKNESS

20 MM
30 MM

www.haiquequartz.com



THE COLLECTION

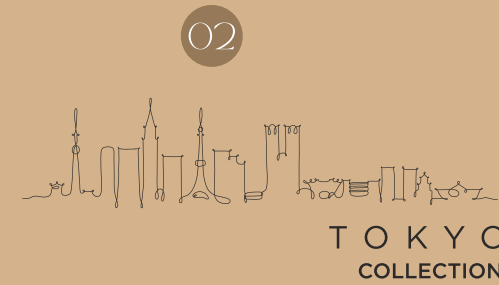
Inspired by the world's five fashion capitals New York, Tokyo, London, Paris, and Milan, we've instilled the soul of these cities into our fashionable and luxury surfaces. Our end-users enjoy the trend of segmenting our product line with fashionable cities based on their preferences.

www.haiquequartz.com

X
E
D
N
I



PAGE:
10 to 13



PAGE:
14 to 17



PAGE:
18 to 23



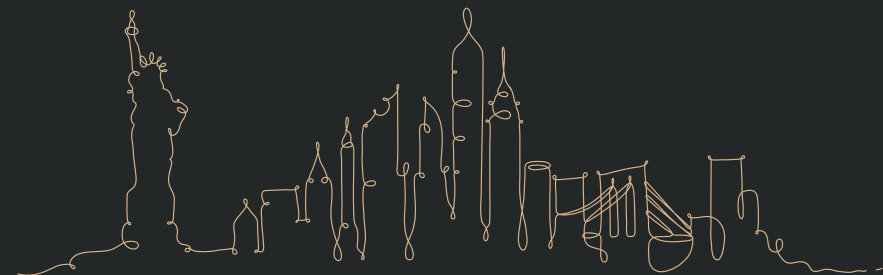
PAGE:
24 to 27



PAGE:
28 to 33

NEW YORK
COLLECTION

New York is undoubtedly one of the most well-known cities in the world. This dynamic metropolis is acclaimed for its luxury shops, spectacular Broadway musicals, and high-flying corporate tycoons. After researching about this city, we have deduced that New York is quite modern and functional. So here at Haique, we create such designs that match the vibe of this city. In this collection you will find modern and functional slab designs inspired by the new world's capital. We are depicting the nature of city life in our considerably functional products.



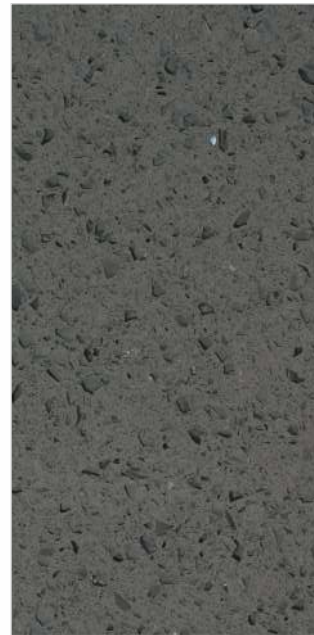
“Somewhere between living and
dreaming, there is New York.”

www.haiquequartz.com



NEW YORK
COLLECTION

ELEVATED LIVING
haique
Luxury Quartz Surfaces



Roosevelt Grey



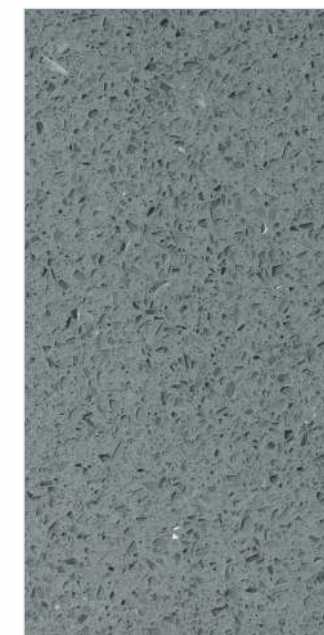
Flatiron Black Crystal



Hamptons Beige



Soho White



Empire Grey



Harlem Brown Crystal

TOKYO
COLLECTION

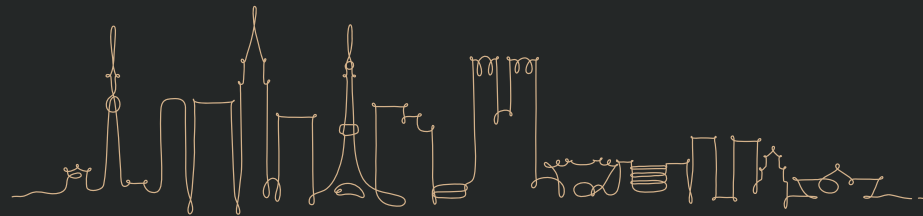
Tokyo is one of the world's most influential fashion capitals, and several of its districts are noted for their particular aesthetics. Harajuku is where you'll find mind-bending fusions of traditional and modern designs. The city is a mix of the ultramodern and the traditional lives, from neon-lit skyscrapers to historic temples. In this collection of Haique, you will find the city's minimal, futuristic and fashionable take on its products. Haique's Tokyo collection is all about the amalgamation of minimalism with its take on modernity.



"Tokyo is not just a city,
it is a world."



www.haiquequartz.com





Edo Beige



Edo White



Fuji White



Hokkaido White



Kimono White



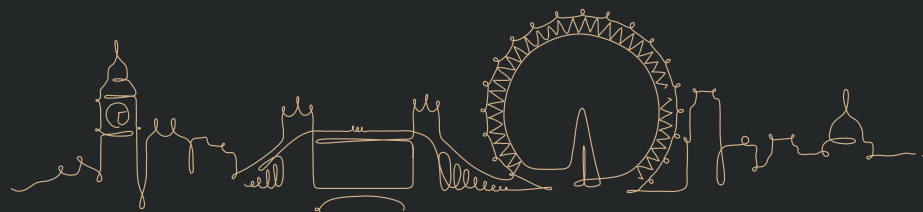
LONDON
COLLECTION

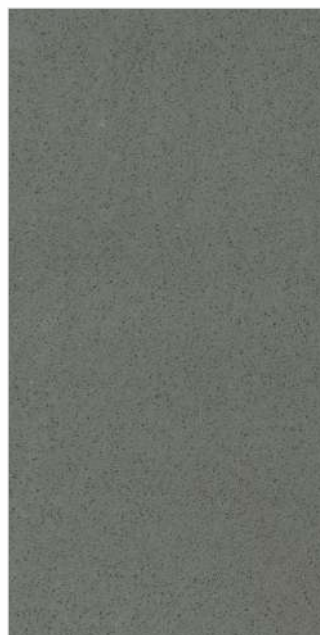
London is a significant player in the fashion industry and has rightfully earned its place as one of the essential iconic fashion hubs in the world. London is home to some of the most successful British high-end fashion designers. They are an inspiration to us with their timeless and classic designs. While designing this collection, we kept in mind the colourful streets of Notting Hill. We have tried to incorporate the lifestyle of this fashionable city in our collection, like the perfect finish with classic colours and timeless designer slabs.



“A bad day in London is still better than a good day anywhere else.”

www.haiquequartz.com





Barbican Grey



Brighton Brown



Cement Grey



Chancery Silver





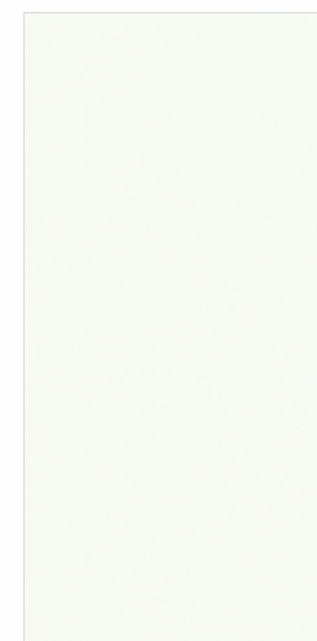
Windsor Beige



Epping Green



Glasgow Grey



Kensington White



PARIS
COLLECTION

Why is Paris the fashion hub of the world today? Simply because, despite the decrease in the number of couture houses, little has changed. Haique retains the same spark of Paris in its products. Inspired by the city's avant-garde fashion houses, we have set the global benchmark for designs. We are developing designer slabs inspired by the city's high-end fashion houses. We have tried to retain the city fashion in our slabs by incorporating its trendy and timeless designs.



“Paris exists to remind us that all our dreams are real.”

www.haiquequartz.com



Bastille Black



Desert Brown



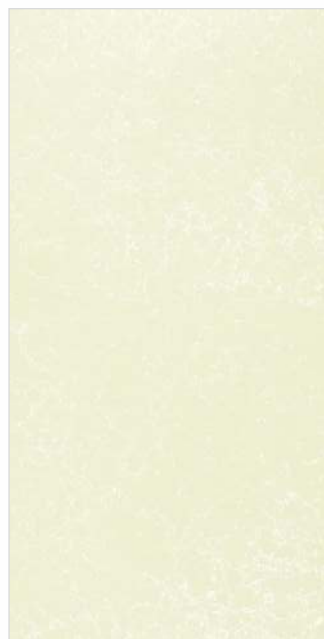
Mont Venise



Trocadero Black



Opera Grey



Pantheon Beige



Palais White

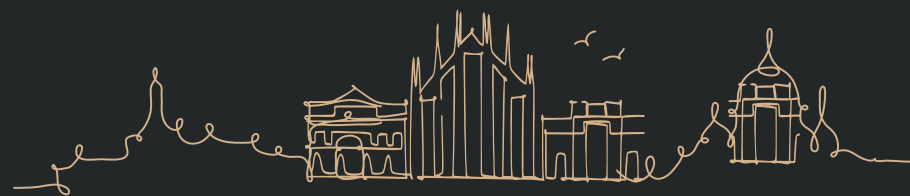


Trocadero White



MILAN
COLLECTION

Milan is the only city that truly deserves the title of "fashion capital of the world". This cosmopolitan city incorporates luxury, art, food, and culture. It's the ideal location for fashionistas and industry enthusiasts. We, at Haique, take direct inspiration from the atelier led classic fashion. The slabs from this collection are all about the amalgamation of the city's renaissance period and modern era. We have tried to fuse the city's art and culture in our slabs for a more authentic look.



"You don't need the universe,
if you have Milan."

www.haiquequartz.com



Ash Grey



Boticelli Nuovo



Marmo Bernini



Marmo Rinaldi



Matisse Gold



Matisse White





Raphael Primo



Raphael Ultimo



Raphael Madonna



Raphael Pieta



Panda White



Profundo White



Vinci Eterno



TECHNICAL SPECIFICATIONS

| | Haique Stone | Granite | Laminate | Solid Surface |
|--|--------------|---------|----------|---------------|
| 10 Years Warranty | ✓ | | | |
| Scratch Resistant | ✓ | ✓ | | |
| Stain Resistant | ✓ | | ✓ | ✓ |
| Heat Resistant | ✓ | ✓ | | |
| Protected from household chemicals, acids and solvents | ✓ | | | ✓ |
| Low Maintenance | ✓ | | | |
| Non-Porous | ✓ | | | ✓ |
| Mold and Mildew Resistant | ✓ | | | ✓ |
| Color Consistency | ✓ | | ✓ | ✓ |



Features

- Easy to Install
- Resistant to Staining
- Impact Resistant
- High MOR
- Thermal Shock Resistant
- Eco-friendly & Sustainable
- Acid Resistant
- Easy to Clean
- Frost Resistant

| Test Performed | Test Standards | Results |
|--|----------------|---|
| Abrasion Resistance | ASTM C 241 | Min 25.0 |
| | ASTM C 1243-93 | Volume of Chord : V= 60.0 - 107.9 mm ³ |
| | EN 14617-4 | Chord Length = 21.0 - 22.5 mm |
| App. Density kg/dm ³ | ASTM C 97 | > 2.1 |
| | EN14617-1 | > 2.1 |
| Boiling Water Resistance | NEMA LD3-3.5 | Pass / No effect |
| Compressive Strength (Mpa) | ASTM C 170 | 150 - 250 (Dry/Wet) |
| | EN14617-15 | 170 - 240 |
| Cigarette Test | ANSI Z 124.6 | Pass |
| Chemical Resistance | ANSI Z 124.6 | Pass |
| Dimensional Stability | EN14617-10 | Class C4 |
| | EN14617-12 | Class A |
| Freeze & Thaw Resistance | ASTM C 1026 | No damage after 20 freeze-thaw cycles. |
| | EN14617-5 | No defect after 25 freeze-thaw cycles. |
| Flexural Strength (MPa) | ASTM C 880 | 40 - 60 (Dry/Wet) |
| | EN14617-2 | 50 - 60 |
| Frost Resistance | DIN 52104 | Complies with Standard |
| Fire Classification | EN 13501-1 | Wall Cladding: B-S1-d0, |
| | | Flooring & Stairs: B-fl-S1 |
| Glossiness Reflection | % | 55 - 70 |
| High Temperature Resistance | NEMA LD3-3.6 | Pass / No effect |
| Impact Resistance (joule) | EN14617-9 | 5 - 14.5 joule |
| Linear Thermal Expansion (30 °C - 100 °C) °C ⁻¹ | ASTM C 372-94 | 3.0 - 5.0 X10 ⁻⁵ per °C |
| | EN14617-11 | 13 - 26.0 X 10 ⁻⁶ |
| Modulus of Rupture (MPa) (Dry/Wet) | ASTM C 99 | 55 - 65 |
| Radiation | GB 6566-2010 | Complies with requirement of standards |
| Resistance to Acids | ASTM C 650 | Not Affected |
| Surface Hardness (Moh's Scale) | EN 101 | 6.0 - 7.0 |
| Surface Burning | ASTM E 84 | Class A |
| Slip Resistance | EN 14231 | Wet: 13-21 SRV , Dry: 43-53 SRV |
| Stain Resistance | ANSI Z 124.6 | Pass |
| Surface Slip Resistance HONED 400 | DIN 51130 | R9 |
| Static Co-efficient of Friction | ASTM C 1028 | Dry: 0.8 , Wet: 0.6 |
| Thermal Shock Resistance | EN14617-6 | No Visual defects after 20 cycles. |
| | | Loss in Mass = 0.04% - 0.07%, |
| | | Loss in flexural strength= 6.0% - 9.5% |
| Thermal Conductivity | EN 12664 | 0.435 - 0.485 W/(m.K) |
| Wear & Cleanability | ANSI Z 124.6 | Pass |
| Water Absorption % | ASTM C 97 | < 0.05 |
| | EN14617-1 | < 0.05 |

haique
Luxury Quartz Surfaces